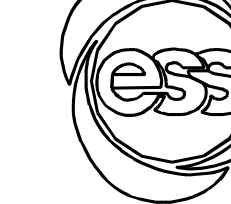


WELD	WPS
1	
2	
3	
4	
5	
6	
7	
8	
9	
10	
11	
12	
13	
14	
15	
16	
17	

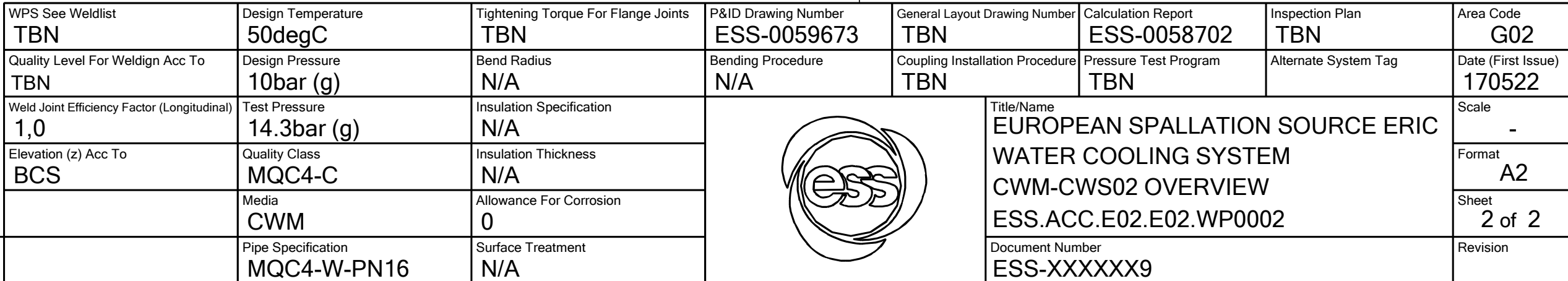
FABRICATION MATERIALS					
PT NO	COMPONENT DESCRIPTION	DN	MATERIAL	QTY (mm)	REMARKS
PIPE					
1	PIPE, SS-EN 10217-7, TC1, 168.3x2.0	150	EN 1.4404	750	
2	PIPE, SS-EN 10217-7, TC1, 168.3x2.0	150	EN 1.4404	6087	
3	PIPE, SS-EN 10217-7, TC1, 168.3x2.0	150	EN 1.4404	252	
4	PIPE, SS-EN 10217-7, TC1, 168.3x2.0	150	EN 1.4404	3811	
5	PIPE, SS-EN 10217-7, TC1, 168.3x2.0	150	EN 1.4404	2844	
6	PIPE, SS-EN 10217-7, TC1, 168.3x2.0	150	EN 1.4404	2872	
7	PIPE, SS-EN 10217-7, TC1, 168.3x2.0	150	EN 1.4404	783	
8	PIPE, SS-EN 10217-7, TC1, 168.3x2.0	150	EN 1.4404	1825	
FITTINGS					
14	TEE EQUAL, SS-EN 10253-4, TYPE A, 168.3x2.0 / 168.3x2.0	150 x 150	EN 1.4404	1	
16	ELBOW 90, TYPE 3D, SS-EN 10253-4, TYPE A, 168.3x2.0	150	EN 1.4404	1	
17	ELBOW 90, TYPE 3D, SS-EN 10253-4, TYPE A, 168.3x2.0	150	EN 1.4404	1	
18	ELBOW 90, TYPE 3D, SS-EN 10253-4, TYPE A, 168.3x2.0	150	EN 1.4404	1	
19	ELBOW 90, TYPE 3D, SS-EN 10253-4, TYPE A, 168.3x2.0	150	EN 1.4404	1	
20	ELBOW 90, TYPE 3D, SS-EN 10253-4, TYPE A, 168.3x2.0	150	EN 1.4404	1	
21	ELBOW 90, TYPE 3D, SS-EN 10253-4, TYPE A, 168.3x2.0	150	EN 1.4404	1	
FLANGES					
29	FLANGE WN, SS-EN 1092-1, TYPE 11, PN16	150		1	
30	FLANGE WN, SS-EN 1092-1, TYPE 11, PN16	150		1	
31	WELDING RING WITH COLLAR, SS-EN 1092-1 TYPE 35, PN16	150		1	
32	LOOSE FLANGE, SS-EN 1092-1, TYP 02, PN16	150		1	
GASKETS					
33	GASKET, EN 1514-1, TYPE XXX, T=1,5mm	150	EXPANDED GRAPHITE	1	

ERECTION MATERIALS					
PT NO	COMPONENT DESCRIPTION	DN	MATERIAL	QTY (mm)	REMARKS
GASKETS					
35	GASKET, EN 1514-1, TYPE XXX, T=1,5mm	150	EXPANDED GRAPHITE	1	
BOLTS					
36	HEXAGONAL NUT, M6M, ISO 4032	20	EN 1515-4, A4, HV≥250	16	
37	WASHER, BRB, ISO 7089	20	EN 1515-4, A4, HV≥250	32	
38	80 mm HEXAGONAL BOLT, M6S, ISO 4017	20	EN 1515-4, A4-70	16	
39	HEXAGONAL NUT, M6M, ISO 4032	20	EN 1515-4, A4, HV≥250	8	
40	WASHER, BRB, ISO 7089	20	EN 1515-4, A4-70	16	
41	90 mm HEXAGONAL BOLT, M6S, ISO 4017	20	EN 1515-4, A4-70	8	
SUPPORTS					
42	PENETRATION ATTA	150		1	
43	ESS Atta	150		1	
44	ESS Atta	150		1	
45	ESS Atta	150		1	
46	ESS Atta	150		1	

WPS See Weldlist TBN	Design Temperature 50degC	Tightening Torque For Flange Joints TBN	P&ID Drawing Number ESS-0059673	General Layout Drawing Number TBN	Calculation Report ESS-0058702	Inspection Plan TBN	Area Code G02
Quality Level For Weldign Acc To TBN	Design Pressure 10bar (g)	Bend Radius N/A	Bending Procedure N/A	Coupling Installation Procedure TBN	Pressure Test Program TBN	Alternate System Tag	Date (First Issue) 170522
Weld Joint Efficiency Factor (Longitudinal) 1,0	Test Pressure 14.3bar (g)	Insulation Specification N/A				Title/Name EUROPEAN SPALLATION SOURCE ERIC WATER COOLING SYSTEM CWM-CWS02 OVERVIEW ESS.ACC.E02.E02.WP0002	Scale -
Elevation (z) Acc To BCS	Quality Class MQC4-C	Insulation Thickness N/A				Format A2	
	Media CWM	Allowance For Corrosion 0				Sheet 1 of 2	
	Pipe Specification MQC4-W-PN16	Surface Treatment N/A				Revision	
					Document Number ESS-XXXXXX9		

Rev	Description	Date	Drawn	Designed	Reviewed	Verified	Quality	Approved
-----	-------------	------	-------	----------	----------	----------	---------	----------

Printed: 22 MAY 2017



	EUROPEAN SPALLATION SOURCE ERIC WATER COOLING SYSTEM CWM-CWS02 OVERVIEW ESS.ACC.E02.E02.WP0002
	Document Number ESS-XXXXXX9